



SA-2



Fully featured safe area / graticule generator module for SD, HD and dual link 4:4:4

eyeheight

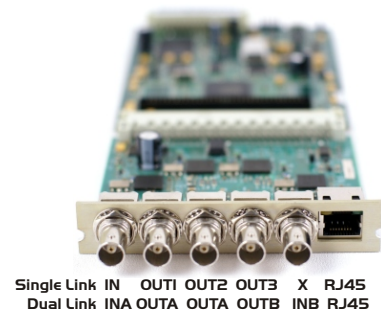
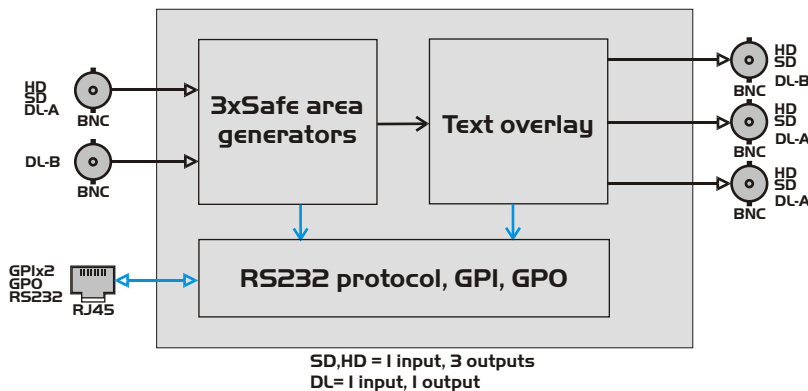
02/11

Overview

This is an SD,HD and dual-link 4:4:4 capable graticule/safe-area and blanking generator. This unit is aimed at post production users for use in SD and HD-SDI multi rate (single-link) and SD, HD-SDI and 2K ultraDef (dual-link) applications.

This unit is supplied as a **genetics** card to provide up to 6 units per 1RU. The unit provides all the commonly used guidelines for safe action, safe title and center markers (short and full screen) for all common TV and film formats. Other features include three full user-configurable safe-area cursor generators, with per-cursor colour, transparency and cursor type and specialist functions for text height and aspect ratio measurement. The unit can also be used as a blanking generator. A Microsoft .NET platform application is provided for configuration of any custom cursors.

Block diagram detail



Key features

Description

- Superimposes safe area and graticules onto an SD, HD or Dual link 4:4:4 signal.

Features

- Integrated blanking generator.
- Fully customizable safe area settings. User can add special cursors to existing ones*
- Coloured cursors with variable opacity and styles.
- Text Height Measurement.
- Line/pixel find and user box.
- Aspect Ratio Measurement with on screen text display in decimal point and "by x"/(x) format.(eg 12.7/9)
- responds to SMPTE 352M video payload identifiers.
- Auto sensing line standards.
- Firmware and software fully updatable by file upload*
- Mechanical relay bypass option available.
- Optional web based java soft panel and specific "web app" available.*

Line standards

- 1080i/50/59.94, 1080p 23.976/24/25/29.97, 720p/50/59.94, 625/50, 525/59.94, Dual link 4:4:4

*Not available on the MX-9 chassis



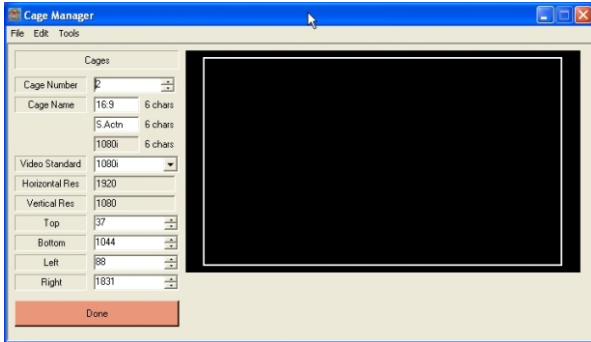
SA-2



Fully featured safe area / graticule generator module for SD, HD and dual link 4:4:4

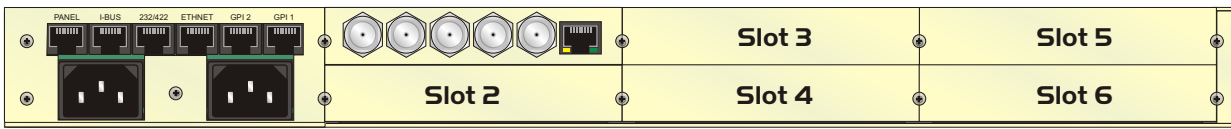
eyeheight

Defining new standards



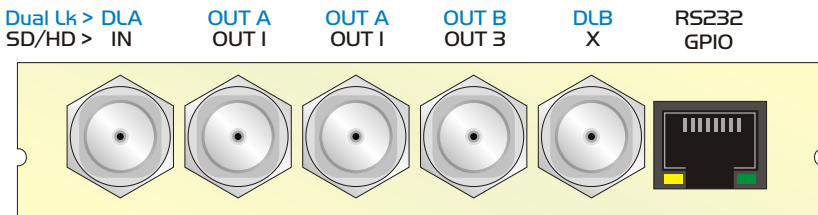
The cage uploader application enables a user to define new safe areas and then download them to the SA-2U. Safe areas can be defined in any line standard and will add themselves to the appropriate list. Due to the architecture of the SA-2U new line standards can be catered for.

Chassis view

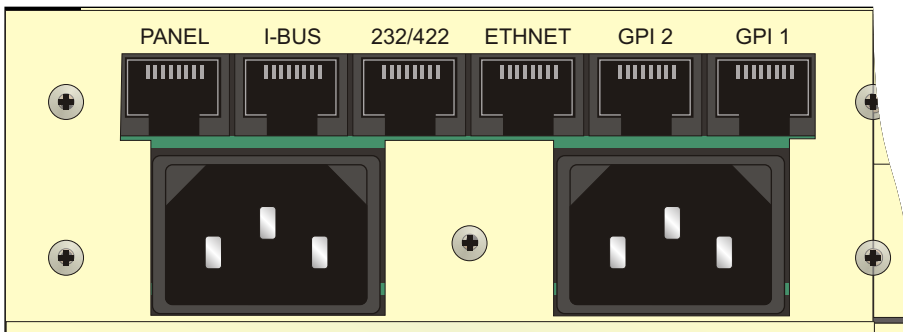


The SA-2 is plug in module for the etherbox FB-9E 1RU chassis. The basic unit takes ONE slot enabling a density of 6 units per 1RU..

Module connections



Chassis connections



The card connections are supplemented by the FB-9E chassis connections which provides GPI inputs and outputs, an Ethernet connection which can be used for browser based chassis monitoring and optional Java control applications and an RS-232/422 automation interface. (Not available on the MX-9 chassis)



SA-2



eyeheight

Fully featured safe area / graticule generator
module for SD, HD and dual link 4:4:4

Ordering information

Order code format: SA-2X-R-J

X should be S for SD only version or M for multirate (SD and HD) version and U for SD, HD and dual link version.

R optional mechanical relay bypass for both links. (Leave blank for no relay bypass).

J optional Java web soft panel control license. (Leave blank for no option).

For example:

SA-2U-R is a SA-2 module, SD/HD and dual link, with mechanical relay bypass.